

# VC-B10U ePTZ USB Camera

**Lumens**<sup>TM</sup>  
Brilliance by Design

The Lumens<sup>TM</sup> VC-B10U is a high-definition ePTZ camera specifically designed for small meetings, classrooms and distance learning. It supports USB 3.0 and is plug-and-play with just one USB cable. Thanks to its built-in TV mount it's easily installed on the TV or on the screen, and equipped with a 120° wide viewing angle and can even enlarge to 3x magnification, attendees appear clear. In addition, it has a built-in microphone, best suited for distance learning or videoconferencing.

## Key Features

- Supports USB 3.0 / 2.0 plug & play
- 12 Megapixel image sensor
- Panoramic 120° viewing angle
- Maximum 3x sensor zoom, and 8x digital zoom
- ePTZ, Remote control
- Supports 64 preset positions
- Built-in microphone
- Built-in TV mount

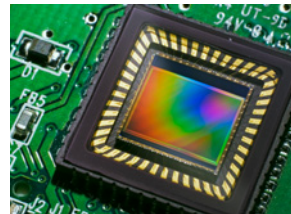


## More Details



### USB 3.0 Plug & Play

The VC-B10U uses standard UVC drivers. There is no need to install special USB drivers. USB 3.0 is 10 times faster than the USB 2.0 standard and it features low latency and non-compress output.



### Excellent Image Quality

The VC-B10U has a professional 12 megapixel image sensor that features low noise, high resolution, and vivid color reproduction and presents an excellent image quality even under insufficient light conditions.



### Panoramic Viewing Angle

The VC-B10U has a panoramic 120° viewing angle that helps users achieve a wider viewing area.



### 3x Sensor Zoom

The 3x sensor zoom can magnify viewing for more details, shapes, color and it's still clear without any distortion.



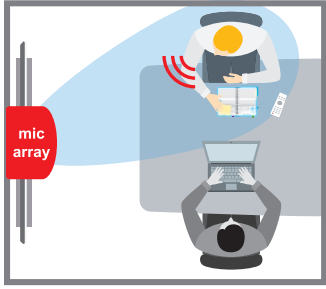
### Easy control

Easy control like Pan, Tilt, Zoom and settings by IR remote controller and Lumens USB PTZ camera controller software. Supports Windows, MAC OS and Android.



### 64 Preset Positions

The VC-B10U has 64 preset settings for pan, tilt, zoom, focus, and white balance modes for more effective and efficient video recording.



## Adaptive Microphone Design

The VC-B10U with two built-in microphones is a best fit for distance learning or videoconferencing. Speech enhancement can be utilized with Microphone Beamforming and noise suppression technology.



## Easy Integration on the Screen

The VC-B10U has a built-in TV mount that can easily install on the TV or on the screen.

## Product Specifications

<b>Sensor</b>	1/2.3" 12 MP CMOS	<b>ePTZ</b>	Support
<b>Video Output</b>	3264x2448 10fps 3264x1836 10fps 1920x1080 60 / 30 fps 1280x720 60 / 30 fps 960x540 30 fps 640x480 30 fps 640x360 30 fps	<b>Preset Positions</b>	IR: 6 Sets USB: 64 sets
<b>Aperture</b>	F1.8	<b>Video Format</b>	YUV / MJPEG
<b>View Angle</b>	120° (Diagonal), 110° (Horizontal)	<b>Video Output (HD) Interface</b>	USB 3.0 (USB 2.0 Compatible)
<b>Minimum Object Distance</b>	50 cm	<b>Microphone</b>	Yes, Built-in
<b>Remote Control</b>	Yes	<b>White Balance</b>	Manual / Auto
<b>Zoom (Lossless)</b>	2x for 1080p (1920x1080) 3x for 720p (1280x720) 4.8x (640x480)	<b>Exposure Control</b>	Auto
<b>Digital Zoom</b>	8x	<b>Brightness Control</b>	Yes
<b>Camera Control Interface</b>	IR remote control / USB	<b>Back Light Comp</b>	On / Off
<b>Driver</b>	UVC / UAC	<b>Focus System</b>	Fixed Focus
		<b>2D Noise Reduction</b>	Yes
		<b>TV Mount</b>	Built-in
		<b>Weight</b>	Main Unit : 120g Main Unit & Shelf : 180g

## I/O CONNECTIONS

### Front



### Side



### Rear

